

matthias kneidinger

INDUSTRIAL DESIGN PORTFOLIO



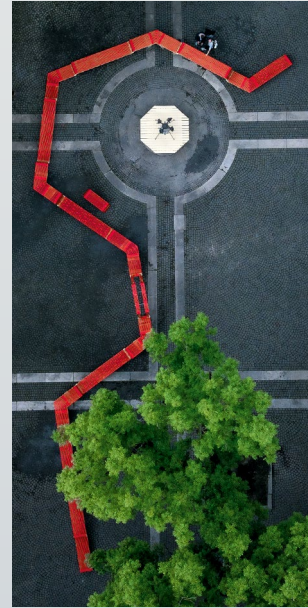
LUMAPOD



HIGOZERO



VARIOTREE



CORDULA ROT



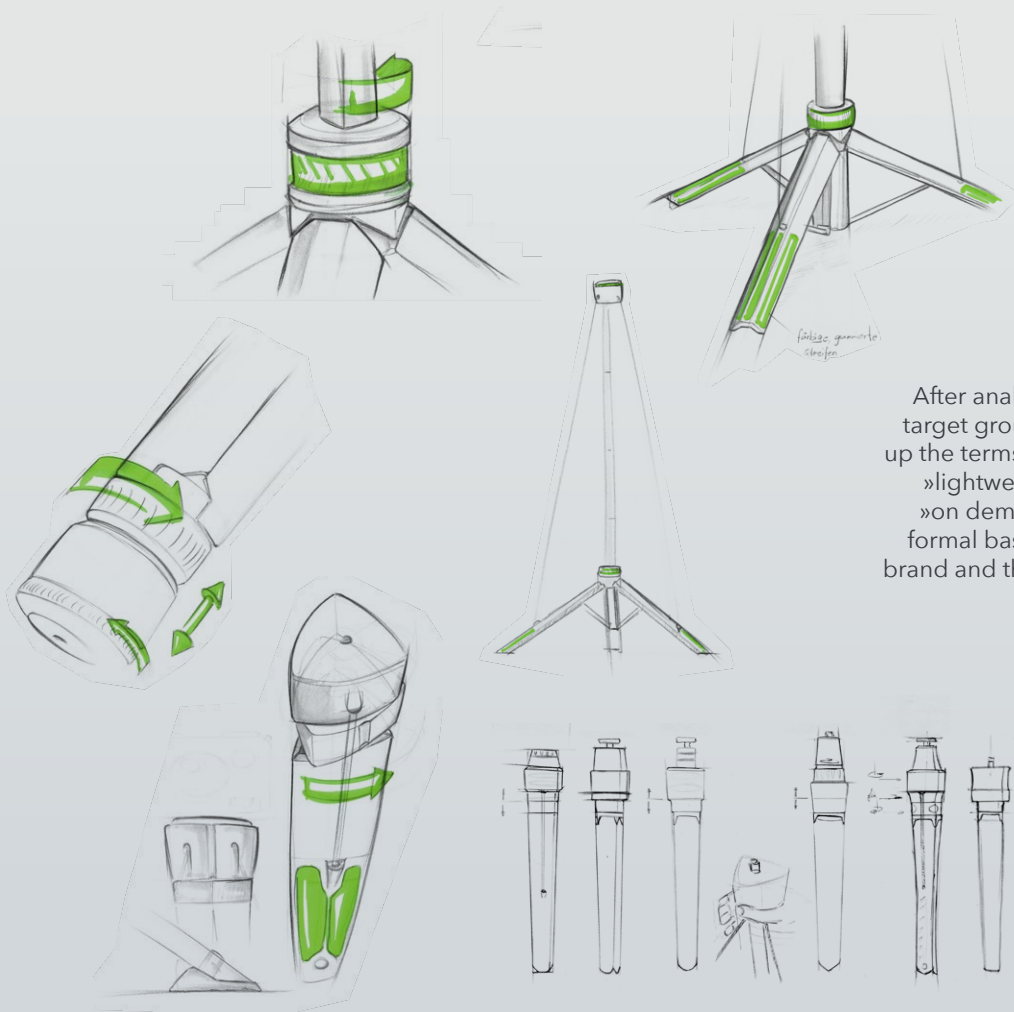
CASCADES



2017

LUMAPOD

I was called into the »Lumapod« team to take on the design at an early stage of development. The idea for this innovative camera tripod came from industrial designer Martin Grabner.



After analysing the target group we set up the terms »smart«, »lightweight« and »on demand« as a formal basis for the brand and the tripod.



In addition to the design work on the product, the focus was on market analysis and the development of a corresponding brand.

The project was finally successfully funded on Kickstarter within 90 minutes and supported with more than half a million euros!



Ready within seconds, lowest weight
and a very efficient pack size are
the core features of the tripod.

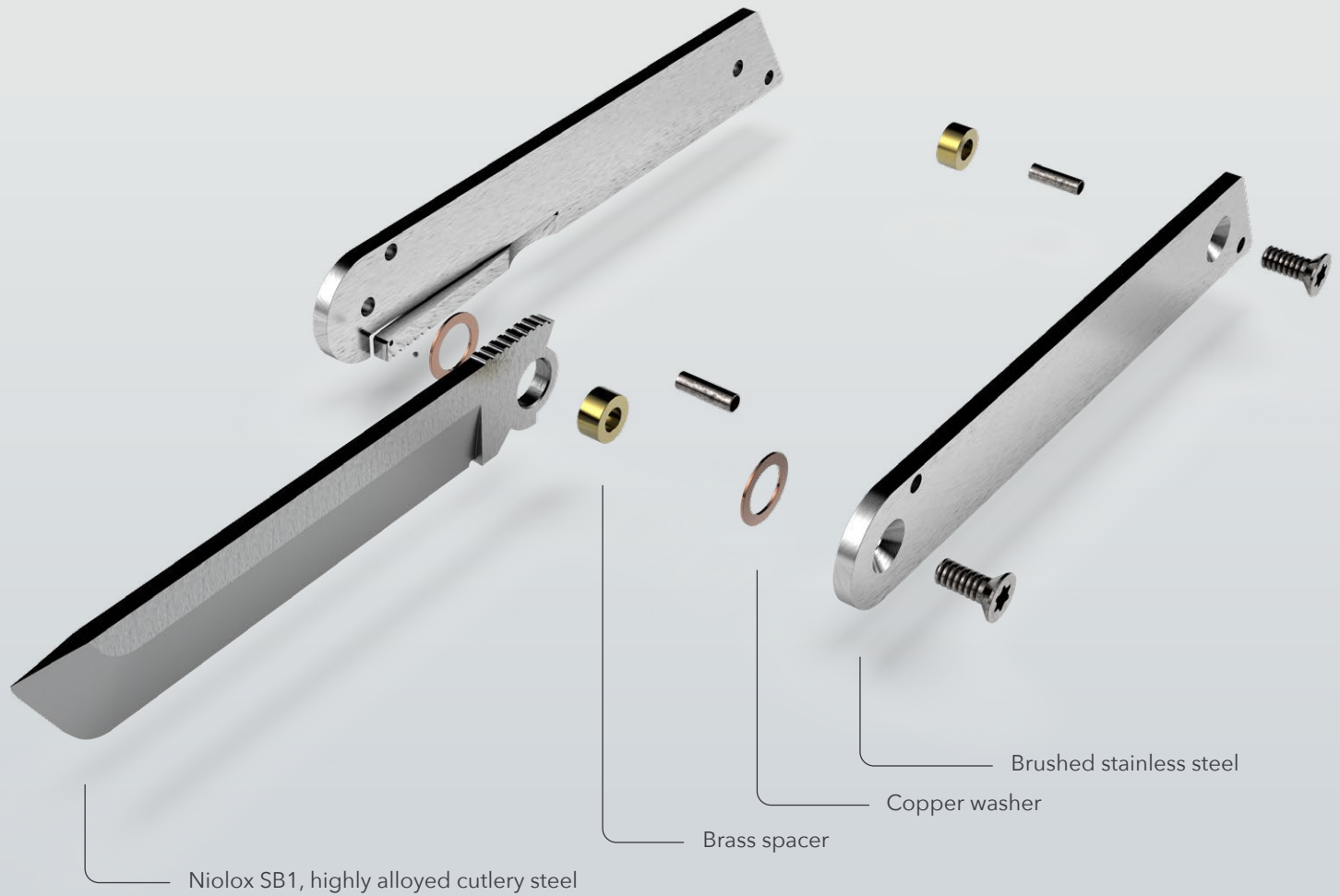
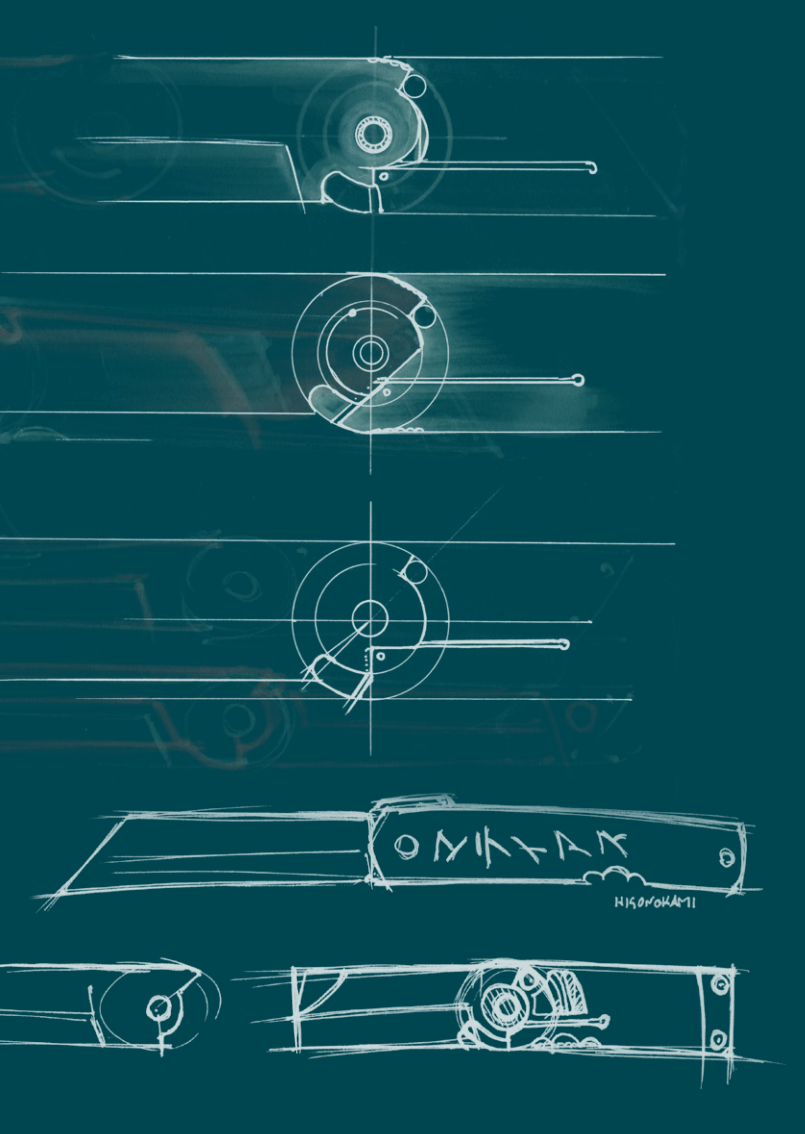


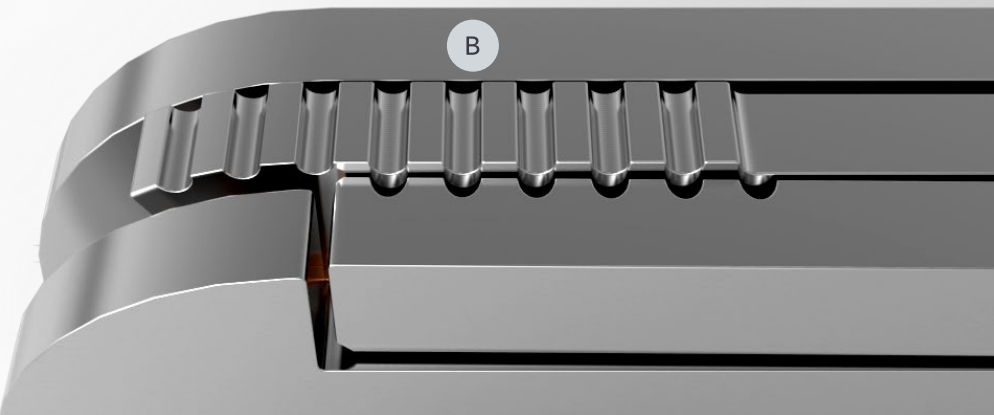
2016 HIGOZERO

Japanese Higonokami knives stand out due to their remarkable minimalistic Design, which is combined with traditional blades of highest quality. The Higozero is a contemporary reinterpretation of these versatile tools.

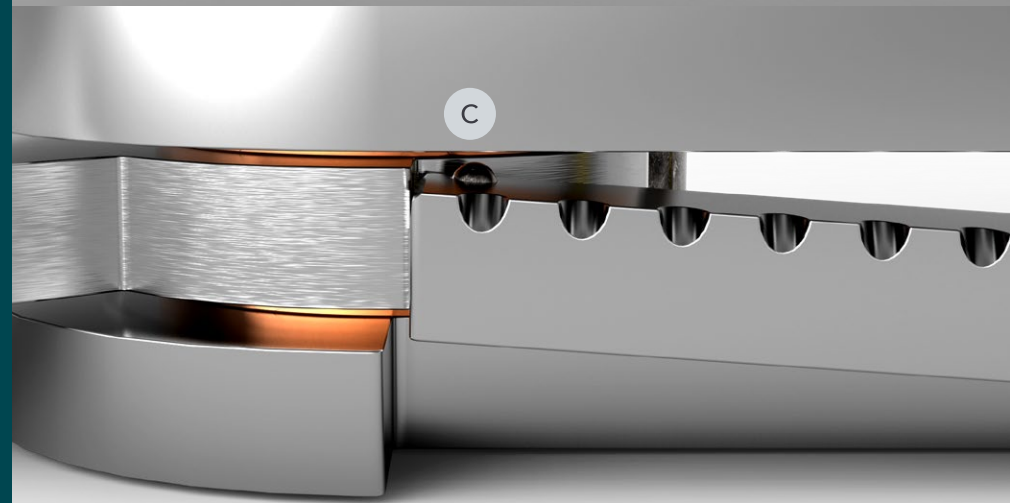
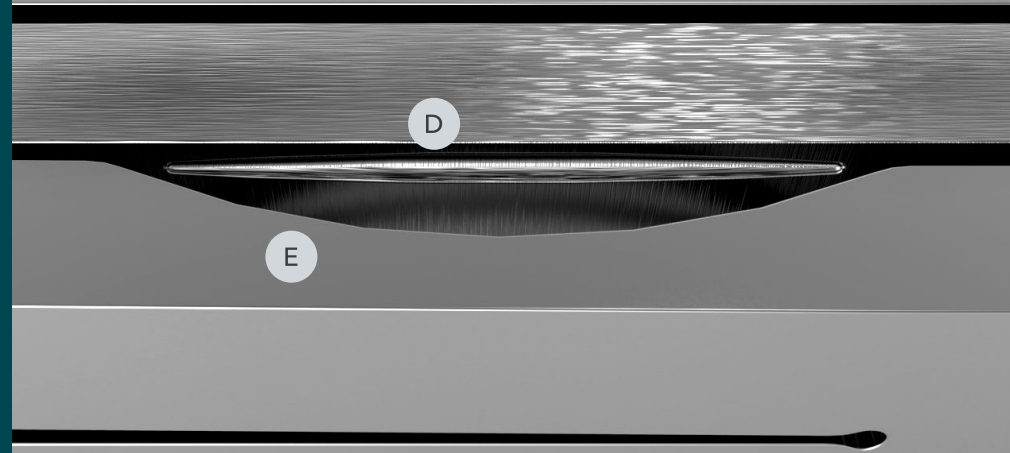
A light all-purpose knife consisting of twelve parts only. Due to the frame-lock design it was possible to cut down the complexity of the components to a minimum.



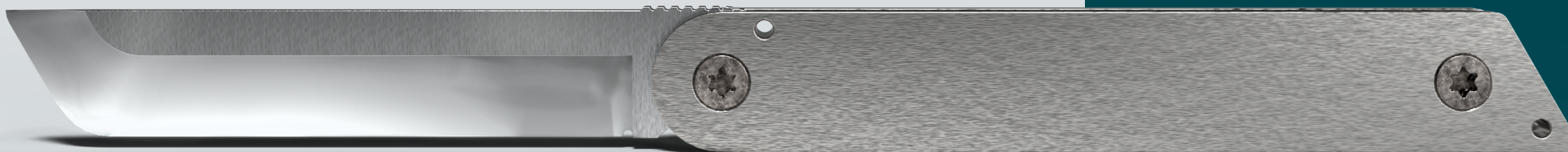


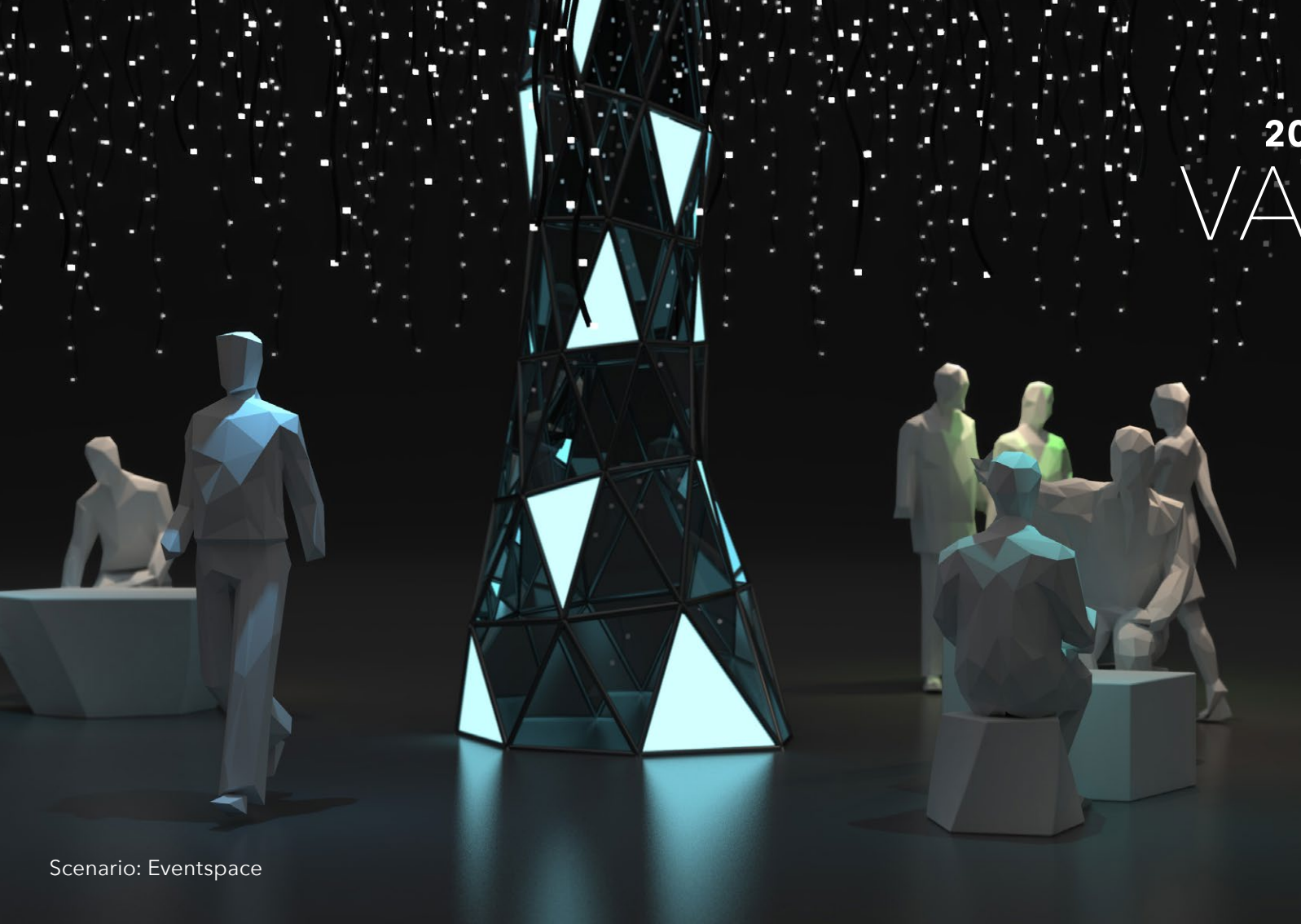


- A Lanyard pin / hole
- B Thumb rise
- C Detent ball
- D Nail nick
- E Spring groove



- o 12 components
- o 8 different parts
- o Weight 150g
- o Length 227 (133) mm



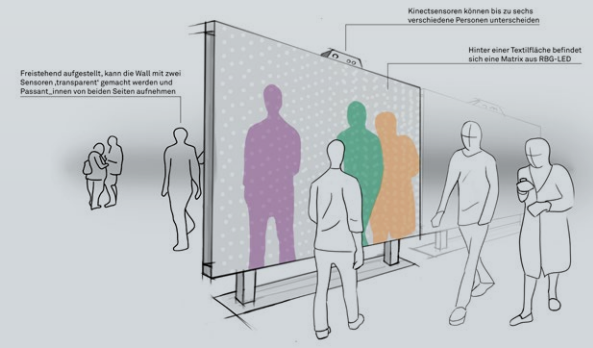
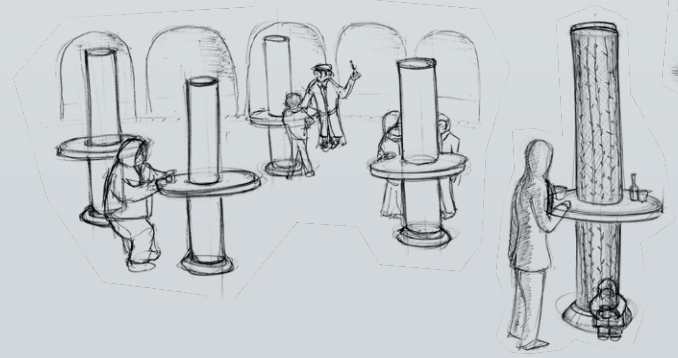


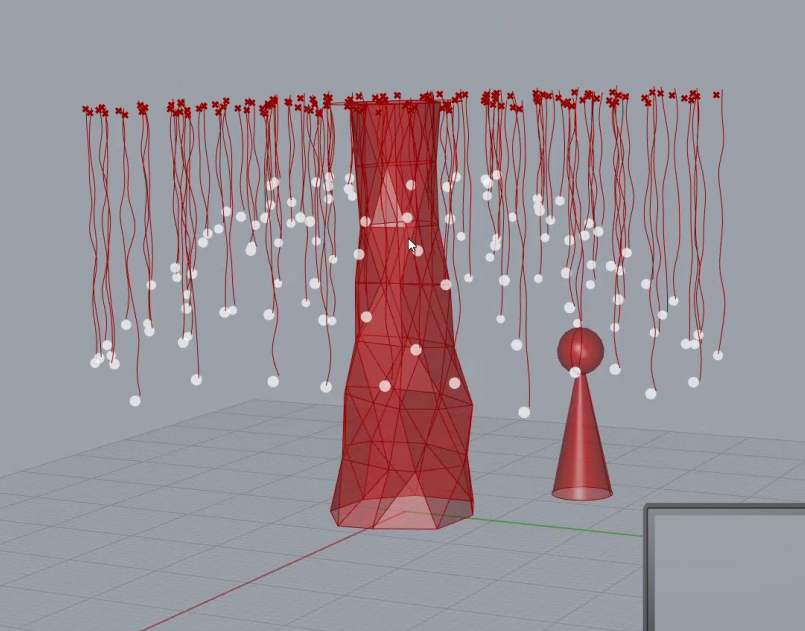
2019 VARIOTREE

The project tells of a world that knows real trees only from stories. In a digital reality, they are reproduced as entirely artificial bodies made of glass, steel and light.

A cooperation with the world's largest producer of Christmas lighting. What is the significance of light in public spaces? What possibilities does the technology offer beyond the Christmas season? How can lighting design be rethought?

Kindliche Baum	Alle Vogel haben ab	Kindliche Wald auf Erdbeergel	realer Wald visualisiert	Windan der Erden/ an orientieren	Licht/Natron	geweblen Baum wie bei Hock 2013
realer Baum produktiv					Licht Atmosphäre	ausdehnung die von Boden von beleuchtet werden
Baum aus Spiegel						Tiere im Baum anhalten
digitaler Baum						gebaut aus Licht säulen
massive aus Stahl						



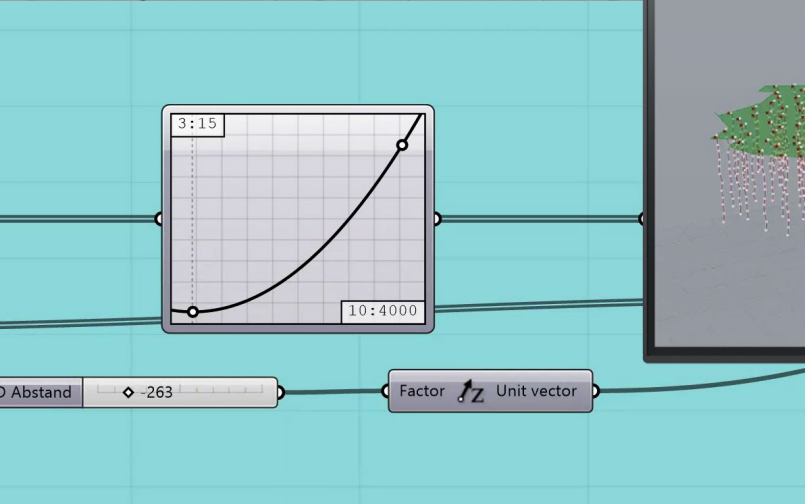


The varioTREE is a room concept that includes a toolbox. Each characteristic of the tree can be set independently to plan individual sceneries.

With the means of generative design, a model can be visualised within seconds that corresponds to the given framework conditions.



Scenario: Dance Hall



See a video of the program at my online portfolio!





Cooperation partner

Scenario: Treelounge



2019

CORDULA ROT

Organisation & student project management,
scheduling, hauling, screw tightening, cooking, ...

The red ribbon streams through the courtyard
like a lifeline and collides with the rigidity
of the surrounding architecture.

The abandoned fountain becomes a hotspot.
Sitting, lying, leaning, standing, climbing, dancing,
hanging - whether groups or individuals, the
structure offers an open space for everyone and
does not determine its usage. An undefined form
for a gap that has gone unnoticed previously.

Workshop instructor: Clemens Bauder

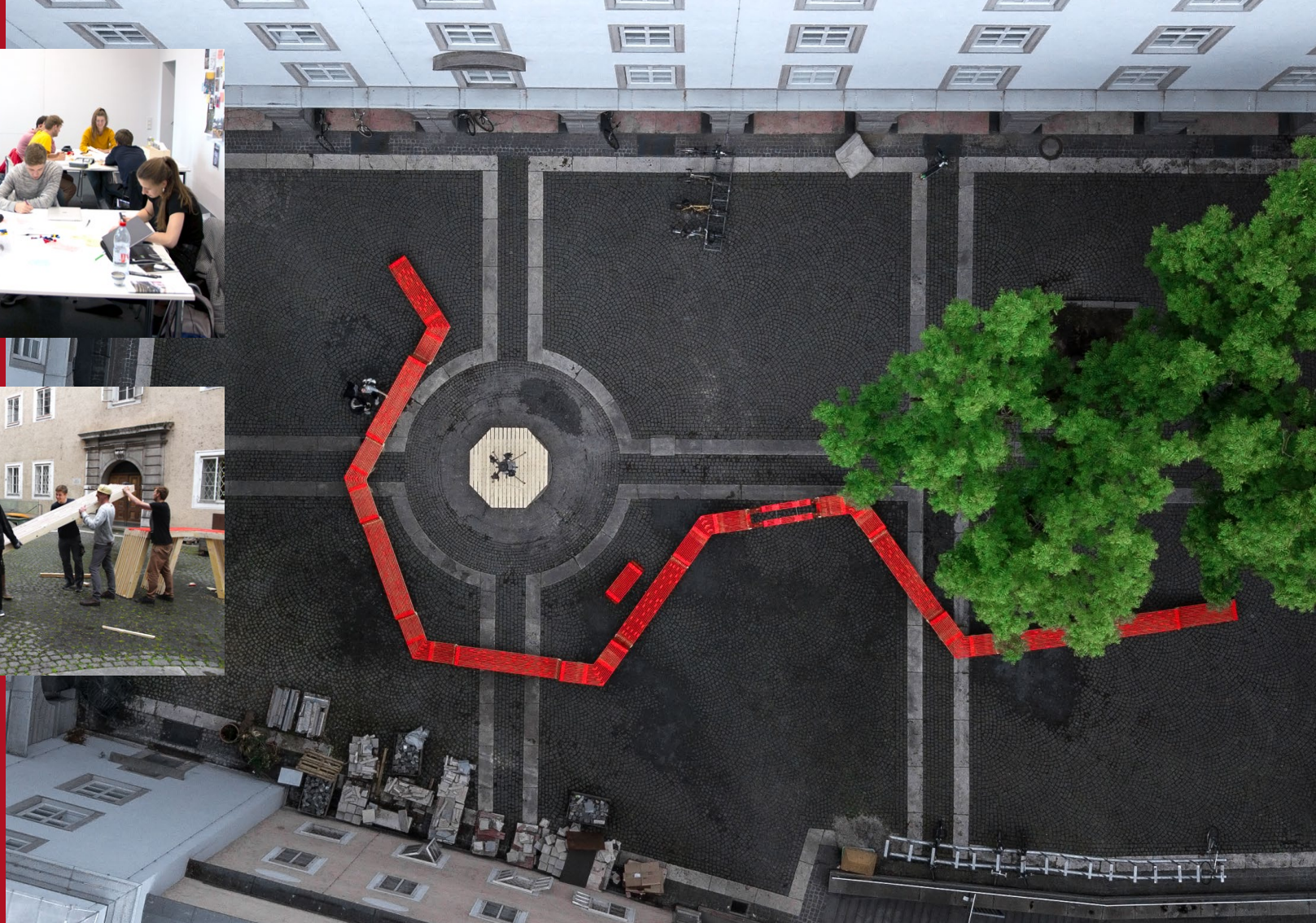
Participants: Sophia Eder, Martin Rothmayer, Martin Olinger, Matthias Kneidinger,
Nadia Raza, Christoph Picco, Aylin Gürel, Jenny Huynh-Minh, Matthias Stütz,
Simon Hochleitner, Aleksandar Pavicic, Lena Edlinger, Anna Okorokova

The workshop started with a collective idea. In five days the whole wooden structure was built by the intensive work of all participants.

It was marvellous to see how versatile the concept was honoured by Linz citizens of all ages.



- 4600 Screws
- 3 m³ Spruce wood
- 6 m Threaded rods
- 5 L Red paint
- 15 Pcs Torx Bits 20
- 90 Pcs Bread rolls
- 2 kg Broccoli

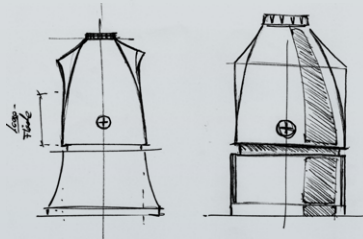
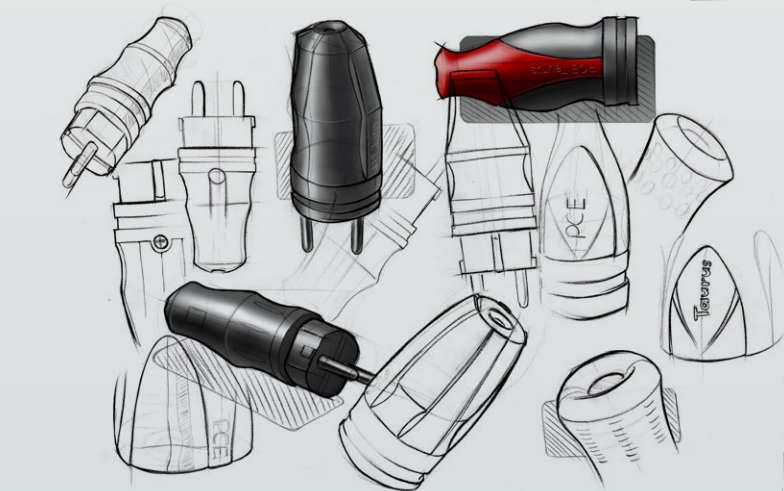


2017
CASCADES
SAFETY CONNECTOR SERIES

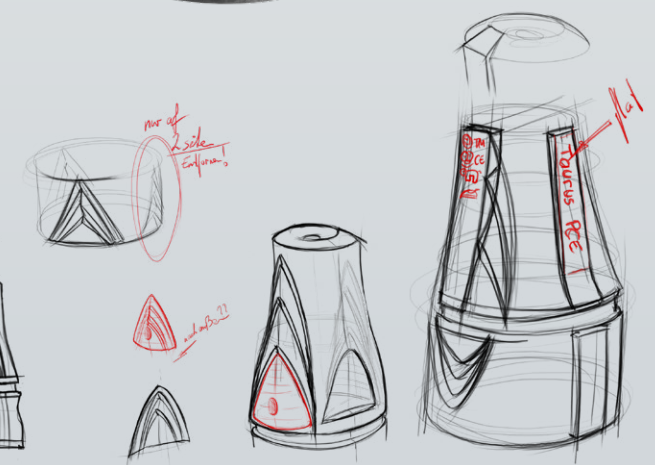


A facelift for a well-known and successful safety plug and connector series.

The customer, an Austrian producer of electrical components, placed much emphasis on a fresh and production friendly design. The concept was shortlisted for evaluation.

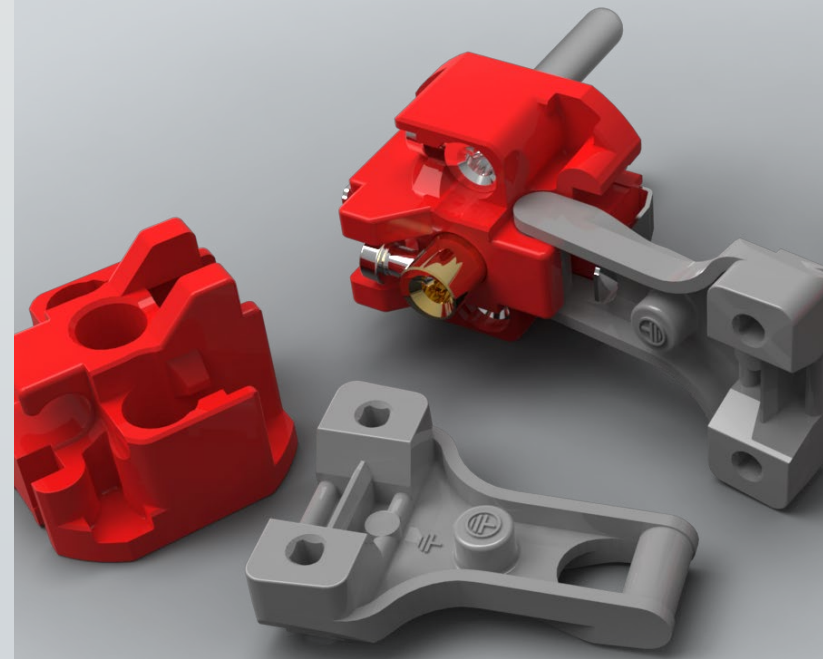


so and form bar!



The curved 'cascades' provide the necessary grip to pull and plug in the connectors firmly.

Mini-feature: The pivoted strain relief makes the cable installation easier.









ONLINE PORTFOLIO



M.KNEIDINGER@MAILBOX.ORG 

+43 681 10659510 